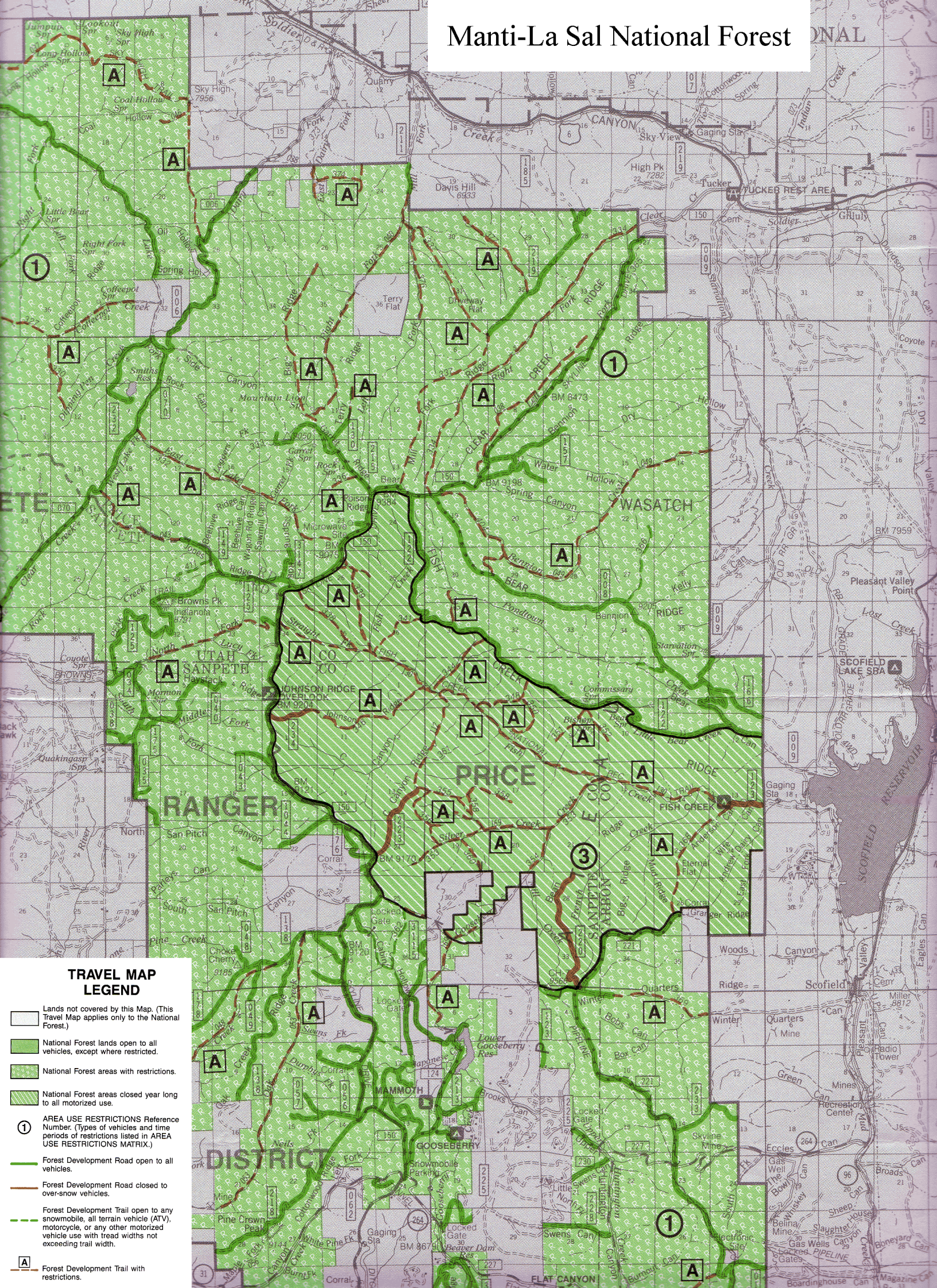


Manti-La Sal National Forest



TRAVEL MAP LEGEND

- Lands not covered by this Map. (This Travel Map applies only to the National Forest.)
- National Forest lands open to all vehicles, except where restricted.
- National Forest areas with restrictions.
- National Forest areas closed year long to all motorized use.
- AREA USE RESTRICTIONS Reference Number. (Types of vehicles and time periods of restrictions listed in AREA USE RESTRICTIONS MATRIX.)
- Forest Development Road open to all vehicles.
- Forest Development Road closed to over-snow vehicles.
- Forest Development Trail open to any snowmobile, all terrain vehicle (ATV), motorcycle, or any other motorized vehicle use with trail widths not exceeding trail width.
- Forest Development Trail with restrictions.

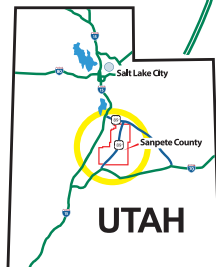
MAP LEGEND

- HIGHWAY 132
- HERITAGE HIGHWAY 89
- INTERSTATE HIGHWAY
- MAJOR HIGHWAY
- SCENIC BYWAY
- SECONDARY ROAD
- UNPAVED ROAD
- SKYLINE DRIVE
- SNOMOBILE TRAIL / TRAILHEAD
- SNOWMOBILE PLAY AREA
- DESIGNATED CAMPGROUND
- HORSE / HIKING TRAIL
- ATV / JEEP / OHV TRAIL

RECREATION / POINTS OF INTEREST

For National Forest Reservations
call: 1-877-444-6777

- 1 Salt Creek Monument
- 2 Fountain Green Fish Hatchery
- 3 Maple Canyon
- 4 Mt. Pleasant Commercial Historic District
- 5 Skyline Mountain Resort & Golf
- 6 Spring City Historic District
- 7 Manti Temple
- 8 Palisade Lake State Park & Golf Course
- 9 Gooseberry Reservoir
- 10 Gooseberry Group
- 11 Flat Canyon
- 12 Snowkiting Launch Site
- 13 South Hughes Group
- 14 Bridges
- 15 Chute Group
- 16 Old Folks Flat
- 17 Forks of Huntington
- 18 Little Bear Group
- 19 Big Rock Group
- 20 Indian Creek
- 21 Joe's Valley Reservoir
- 22 Lake Hill
- 23 GBEEC (Great Basin Environmental Education Center)
- 24 Manti Community / Years
- 25 Ferron Reservoir
- 26 Twelve-Mile Flat
- 27 Millsite Lake State Park
- 28 Yuba Lake State Park
- 29 Yuba Lake State Park
- 30 Yuba Painted Rock Boat Ramp



for more information visit:
WWW.SANPETE.COM
or call:
1.435.835.6877
1.800.281.4346

